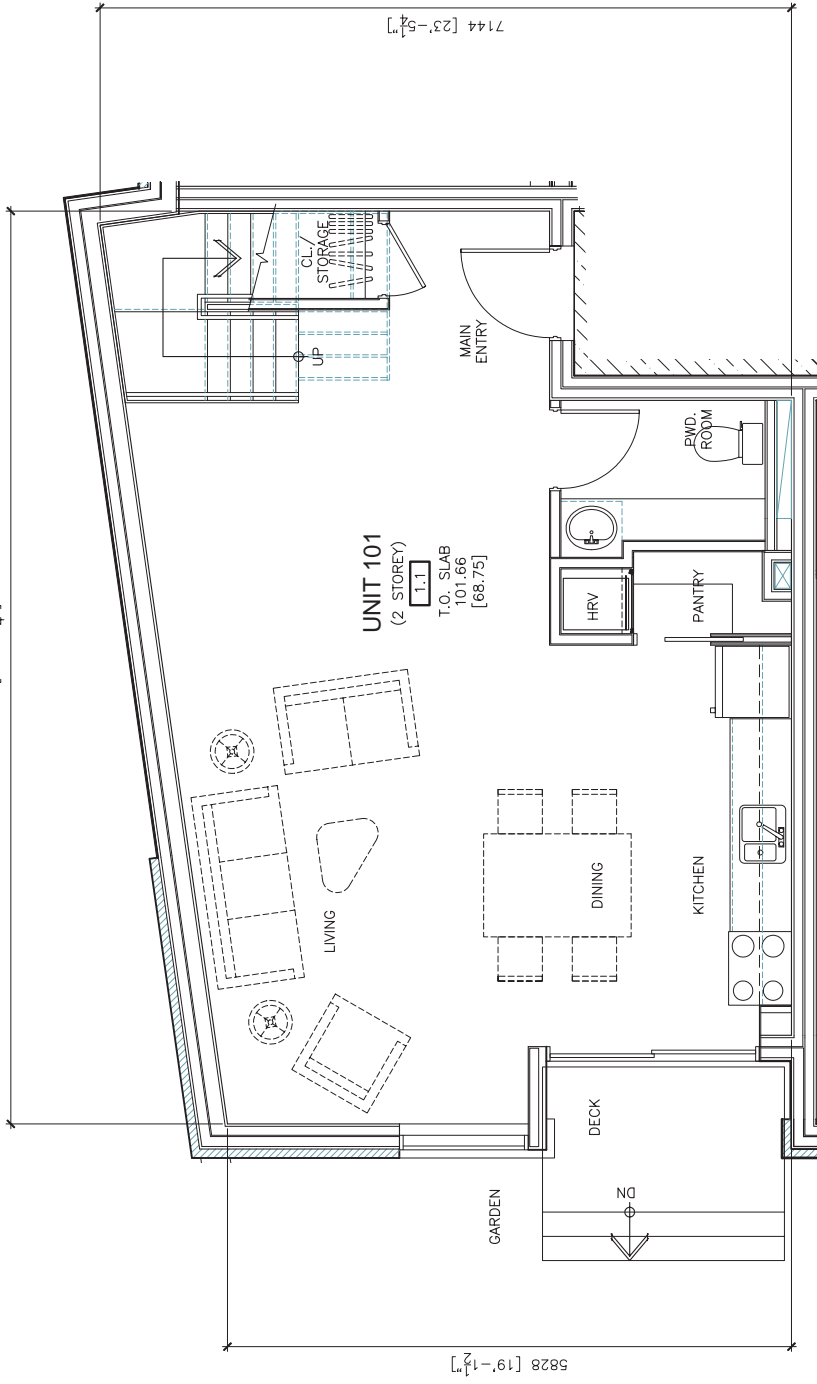




9430 [30'-11 1/4"]



**UNIT 101**  
 (2 STOREY)  
 1.1.1  
 T.O. SLAB  
 101.66  
 [68.75]

5828 [19'-1 1/2"]

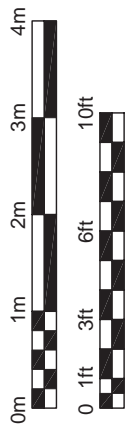
7144 [23'-5 1/4"]

DATE: OCTOBER 2009

Christopher Simmonds **ARCHITECT**

THE ANNEX / 45 ECCELES ST. OTTAWA ON K1R 6B3  
 613.567.7888 PHONE / 613.567.7528 FAX / csaarchitect.com

1014 Bank Street Ottawa Ontario



**EcoCité on the canal**  
**UNIT #101 (LEVEL 1)**  
 SCALE: 1:50

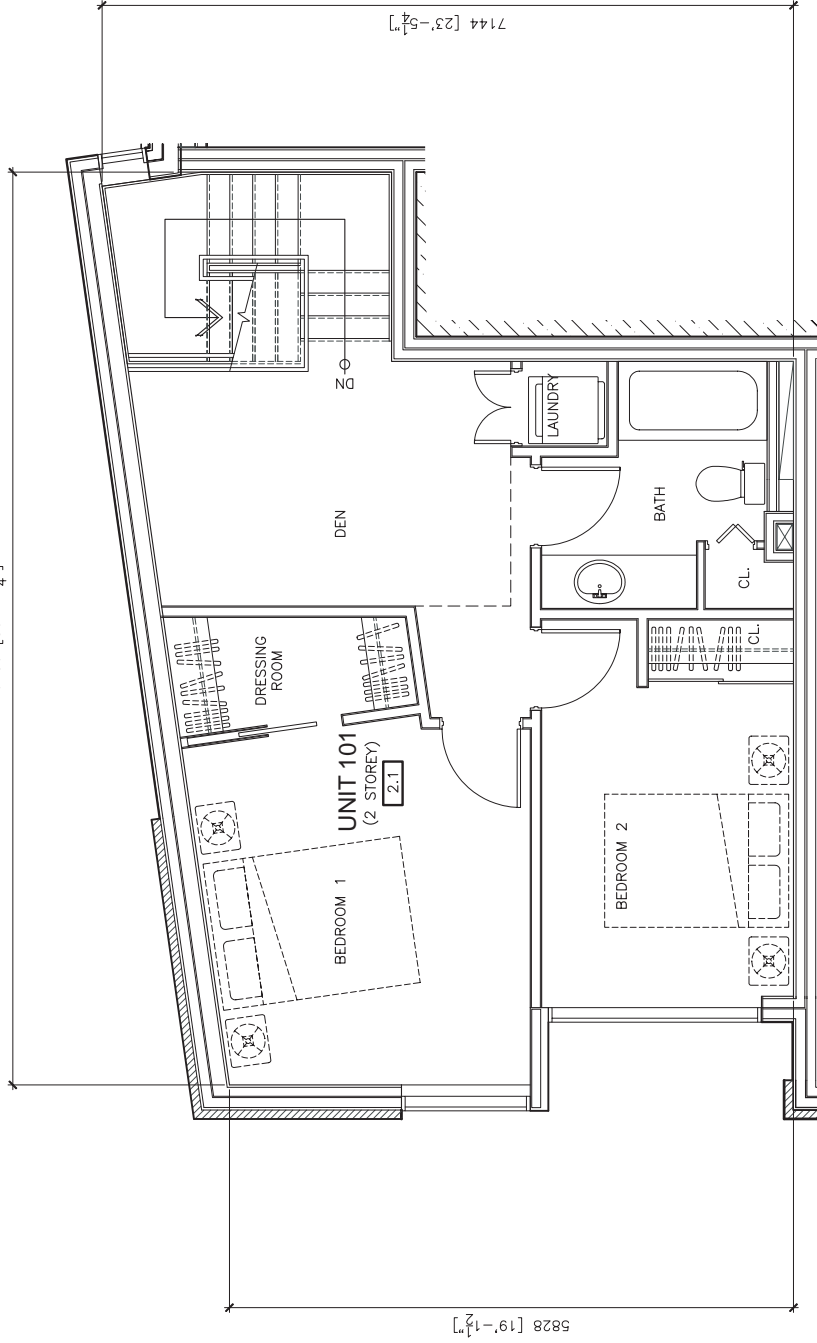
Total Unit Floor Area:	1307 sqftft
Total Exterior Garden Area:	498 sqft
<b>Storage: Locker at basement level or second level.</b>	

Floor Area This Level:	673 sqft
Exterior Garden area this level:	498 sqft

**Pour renseignements :**  
 paul@teambourque.com  
 1-613-730-HOME (4667)



9430 [30'-11 1/4"]



DATE: OCTOBER 2009

Christopher Simmonds ARCHITECT



THE ANNEX / 45 ECOCLES ST. OTTAWA ON K1R 6S3  
613.567.7888 PHONE / 613.567.7528 FAX / csaarchitect.com

**ECOCité**  
on the canal

1014 Bank Street Ottawa Ontario



# ECOCité on the canal UNIT #101 (LEVEL 2)

SCALE: 1:50

**Pour renseignements :**  
paul@teambourque.com  
1-613-730-HOME (4667)

**Floor Area This Level: 635 sqft**

Total Unit Floor Area: 1307 sqftft

Total Exterior Garden Area: 498 sqft

**Storage: Locker at basement level or second level.**