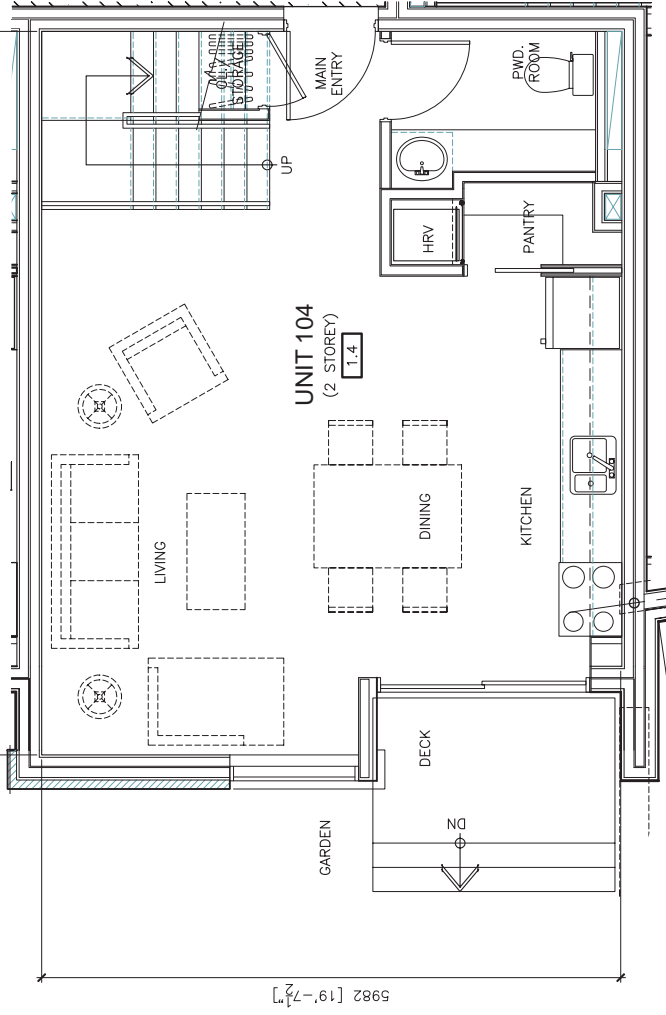




7475 [24'-6 1/4"]



5982 [19'-7 1/2"]

DATE: OCTOBER 2009

Christopher Simmonds ARCHITECT



THE ANNEX / 45 ECOLES ST. OTTAWA ON K1R 6 S3  
613.567.7888 PHONE / 613.567.7528 FAX / csaarchitect.com

**ECOCité**  
on the canal  
1014 Bank Street Ottawa Ontario



# ECOCité on the canal UNIT #104 (LEVEL 1)

SCALE: 1:50

**Pour renseignements :**  
paul@teambourque.com  
1-613-730-HOME (4667)

**Floor Area This Level: 512 sqft**  
**Exterior Garden area this level: 387 sqft**

Total Unit Floor Area: 1024 sqft

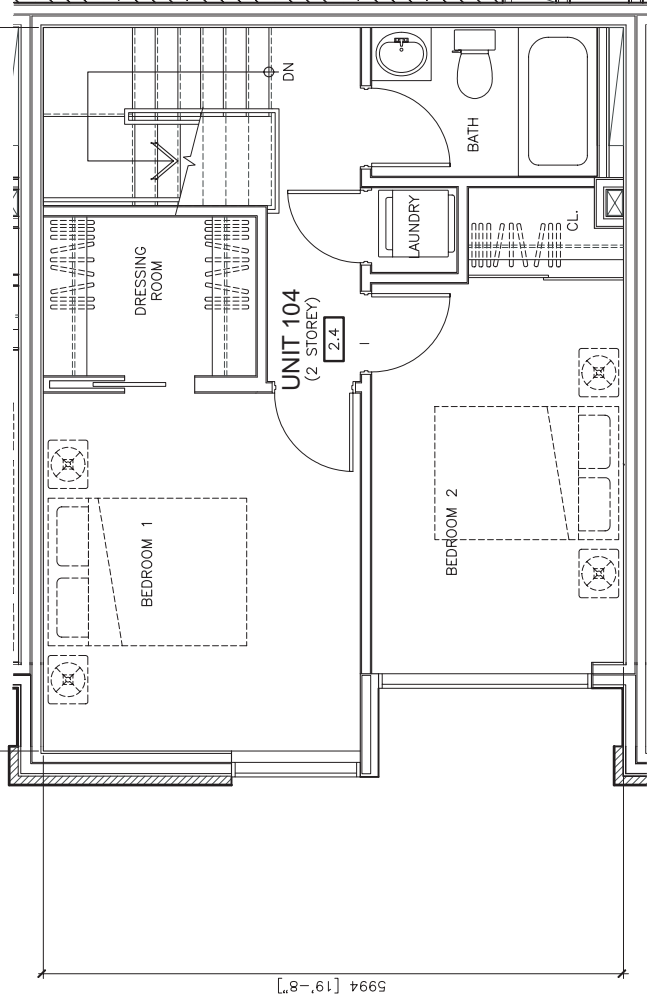
Total Exterior Garden Area: 387 sqft

**Storage locker on 2nd level or basement level.**



5994 [19'-8"]

7475 [24'-6 1/4"]



DATE: OCTOBER 2009

Christopher Simmonds ARCHITECT



THE ANNEX / 45 ECCLES ST. OTTAWA ON K1R 6S3  
613.567.7888 PHONE / 613.567.7528 FAX / csaarchitect.com



# EcoCité on the canal UNIT #104 (LEVEL 2)

SCALE: 1:50

**Pour renseignements :**  
paul@teambourque.com  
1-613-730-HOME (4667)

**EcoCité**  
on the canal  
1014 Bank Street Ottawa Ontario